

## Benq / Samsung Flashing with Jungle Flasher .26beta

### Tools / Software Used

Via Drivers 5.30c - [http://www.viaarena.com/Driver/via\\_raid\\_v530c.zip](http://www.viaarena.com/Driver/via_raid_v530c.zip)

JungleFlasher .26 Beta #xbins

Xtractor360

Windows XP Pro Service Pack 2

If your running vista right click on JungleFlasher go to properties --> compatability and tick run as Windows XP Pro Service Pack 2, you also might want to put the entire JungleFlasher folder in the root of you c drive, seems that some people have problem with long file names

### Benq MTK Flash 32

Click on the "MTK Flash 32 tab"

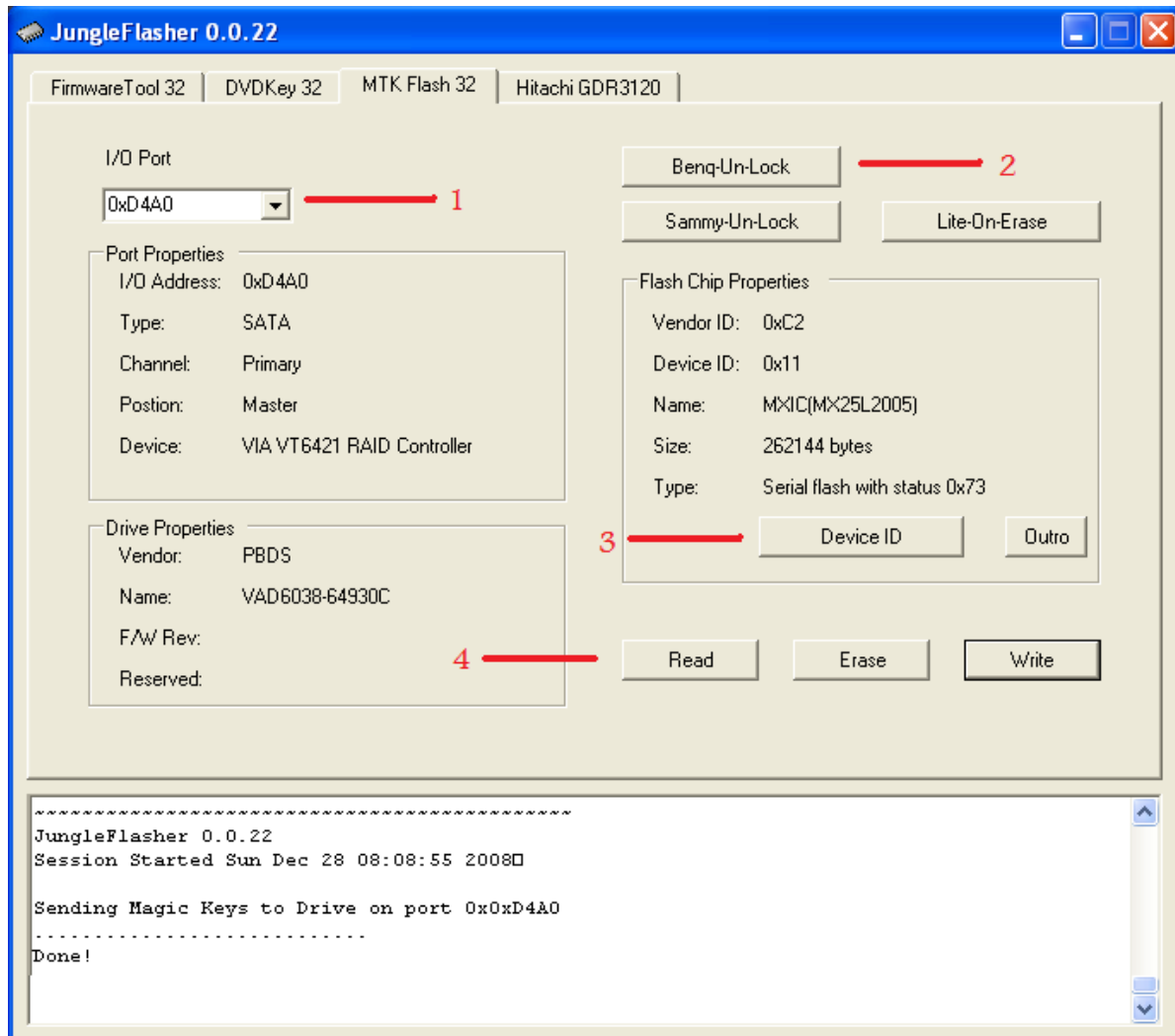
1. In the drop down tab select I/O Port

2. Click "Benq Un-Lock" you will see "Sending Magic Keys to Drive on port"

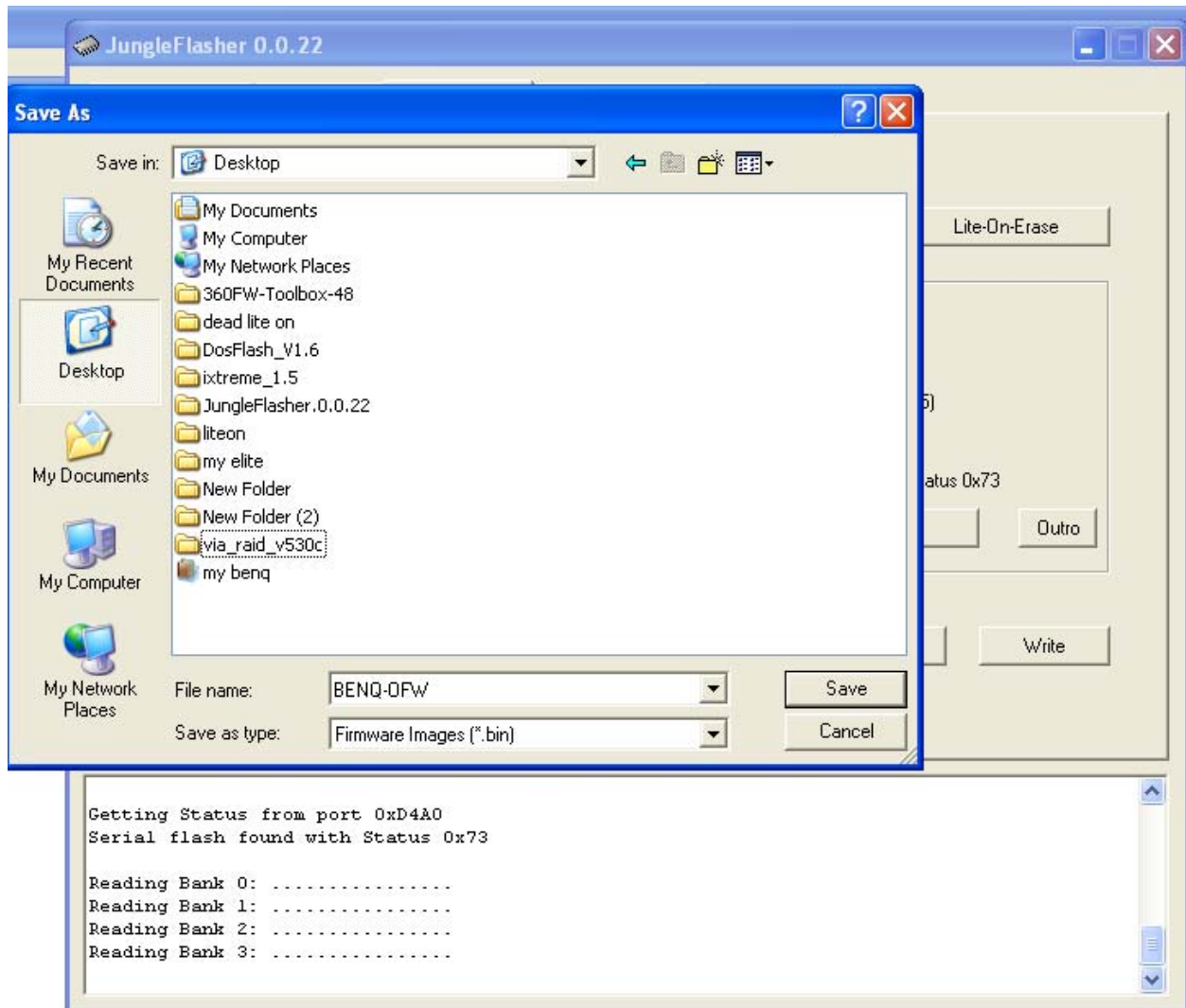
Benq un-lock won't unlock 62430C at the moment you have to use bad flash method

3. Click "Device Id" above your should see your Flash Chip Properties

4. Click "Read"



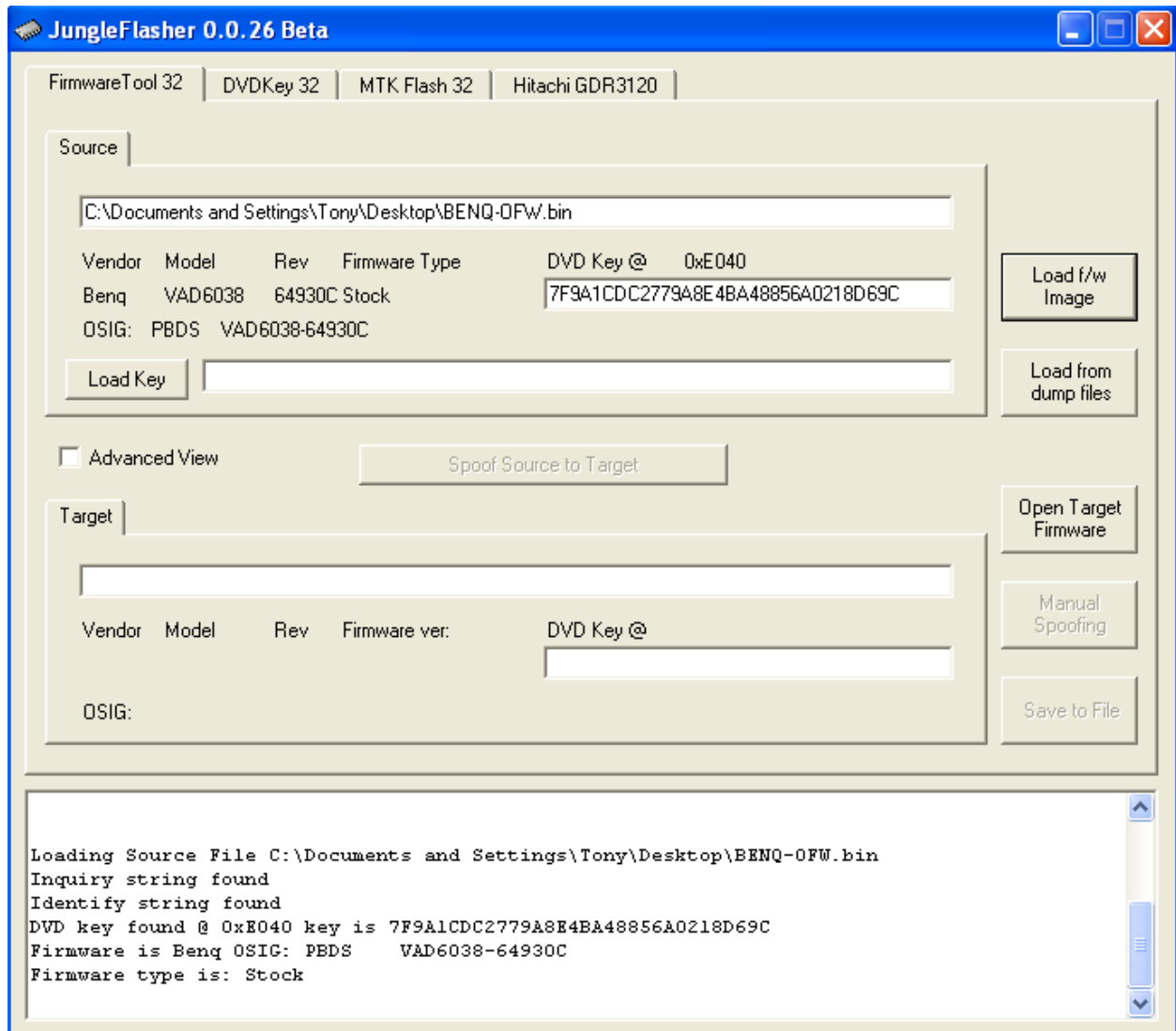
5. After you have successfully read the drive you will get a popup box asking you to have the dump.



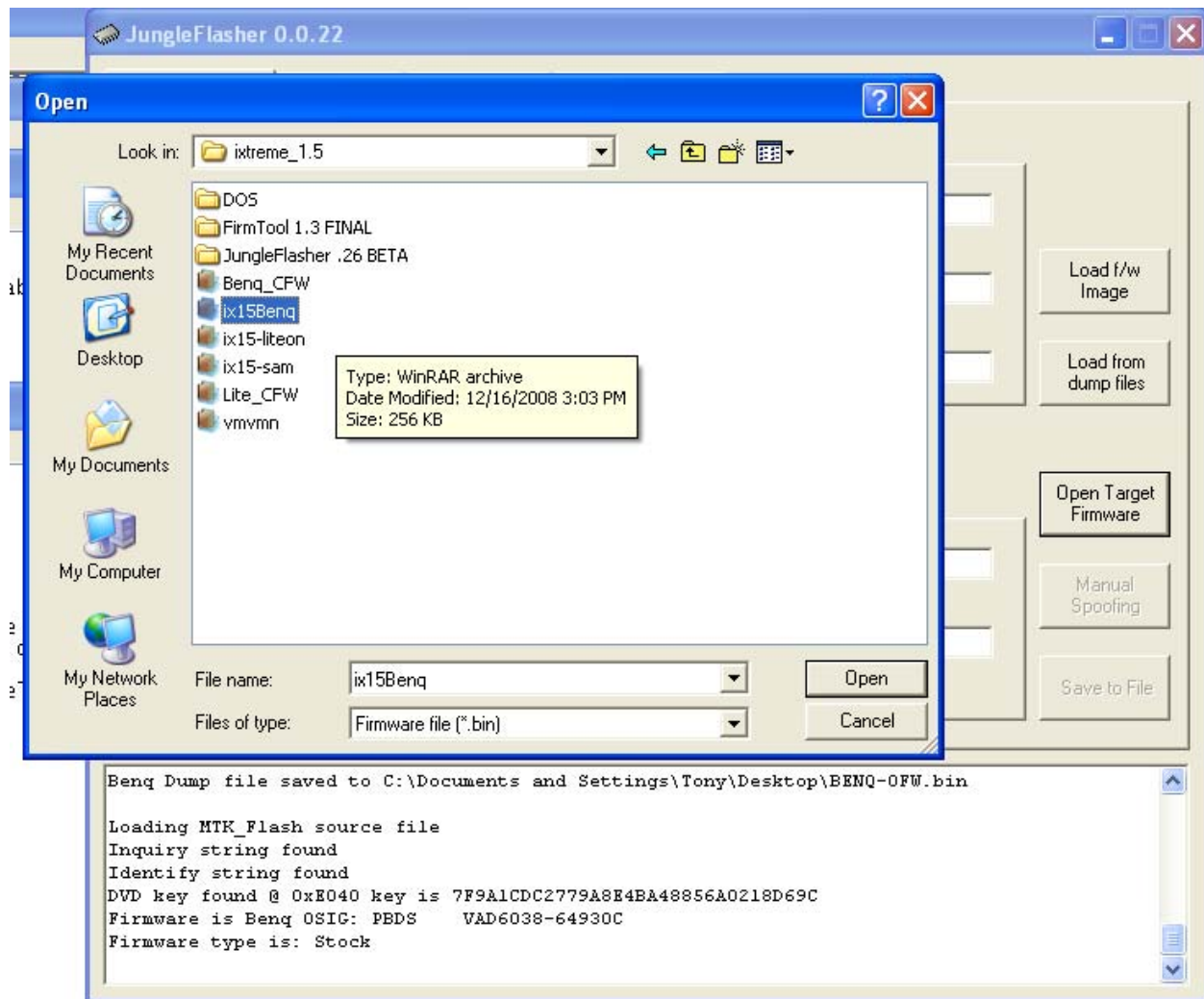
## Benq Firmware Tool 32

"Firmware Tool 32" will open with your dump information at the top under

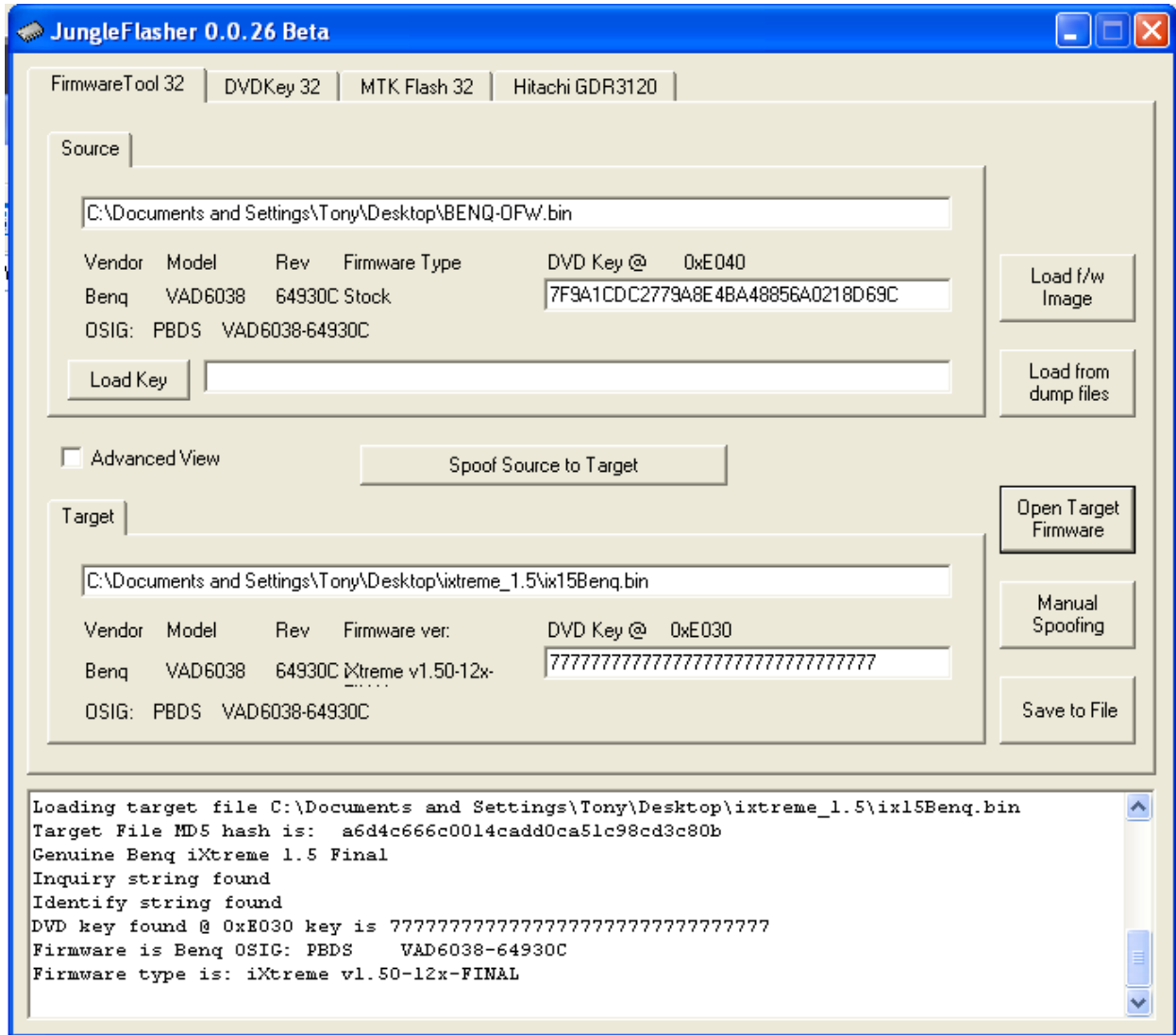
"Source"



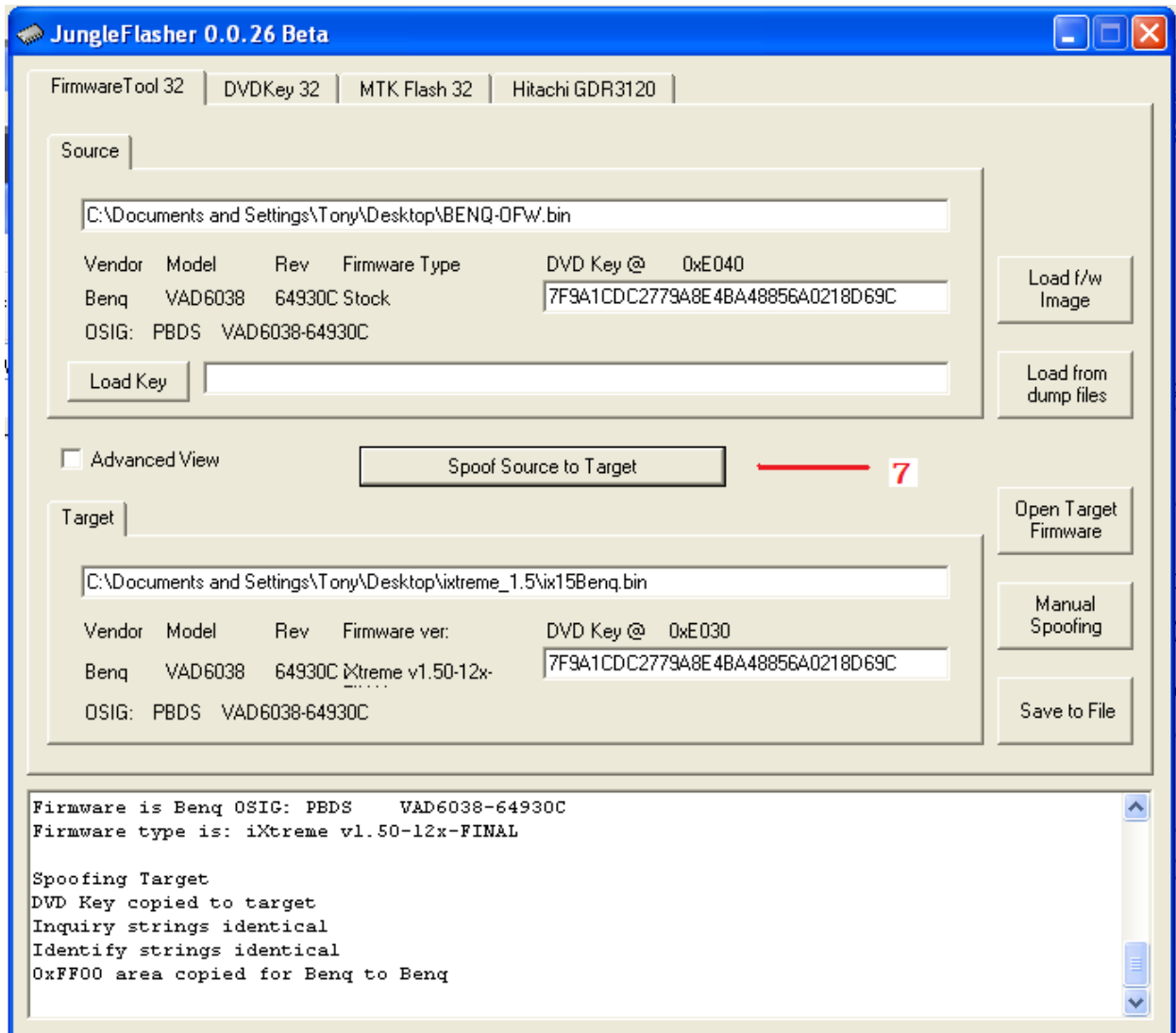
6. Click " **Open Target Firmware** " and select your ix15Benq.bin



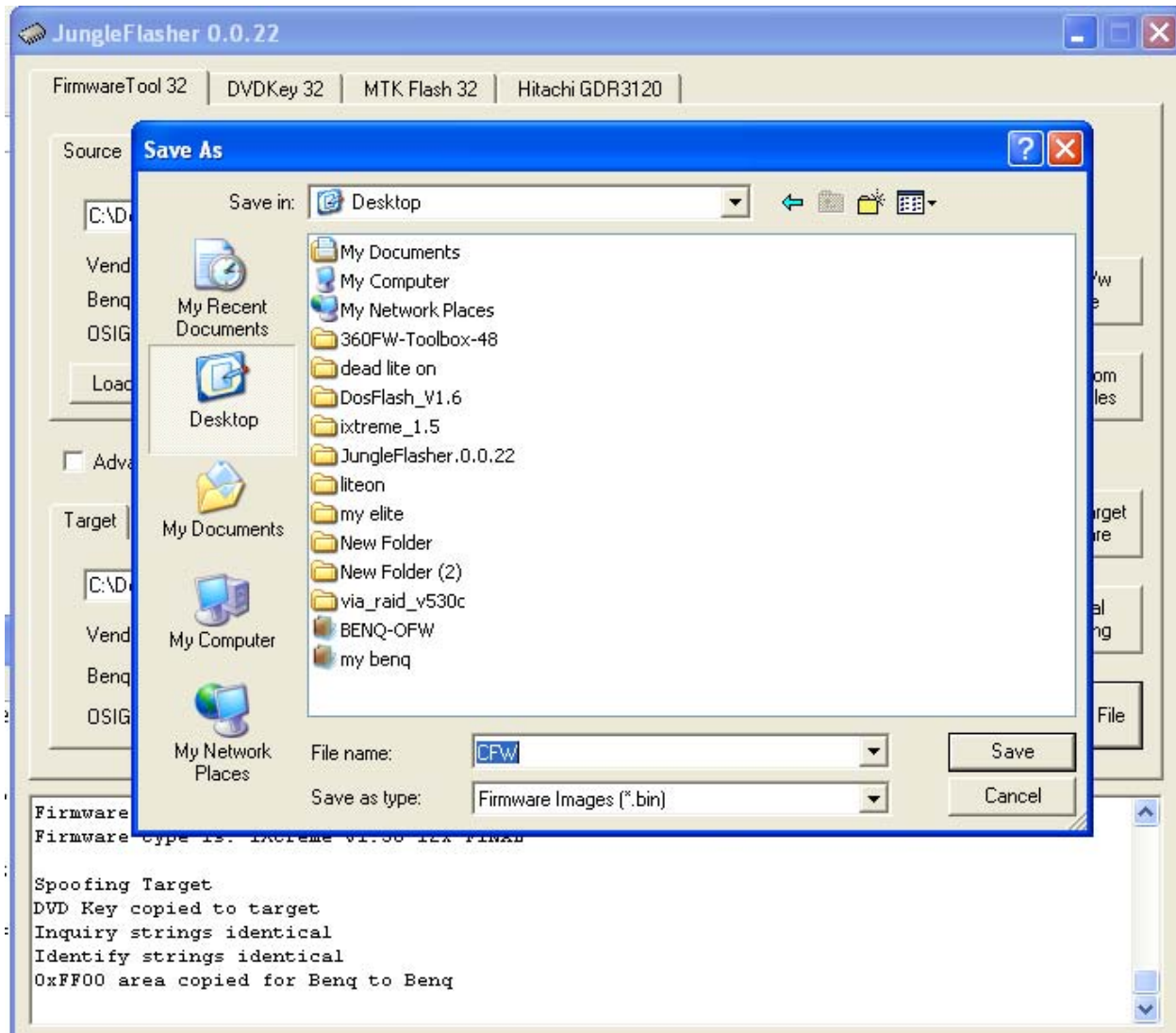
This is how it will look after you opened the **ix15-Benq** the keys don't match and the keys still have to be injected into the firmware.



7. Click "SpooF Source to Target" notice that the keys match



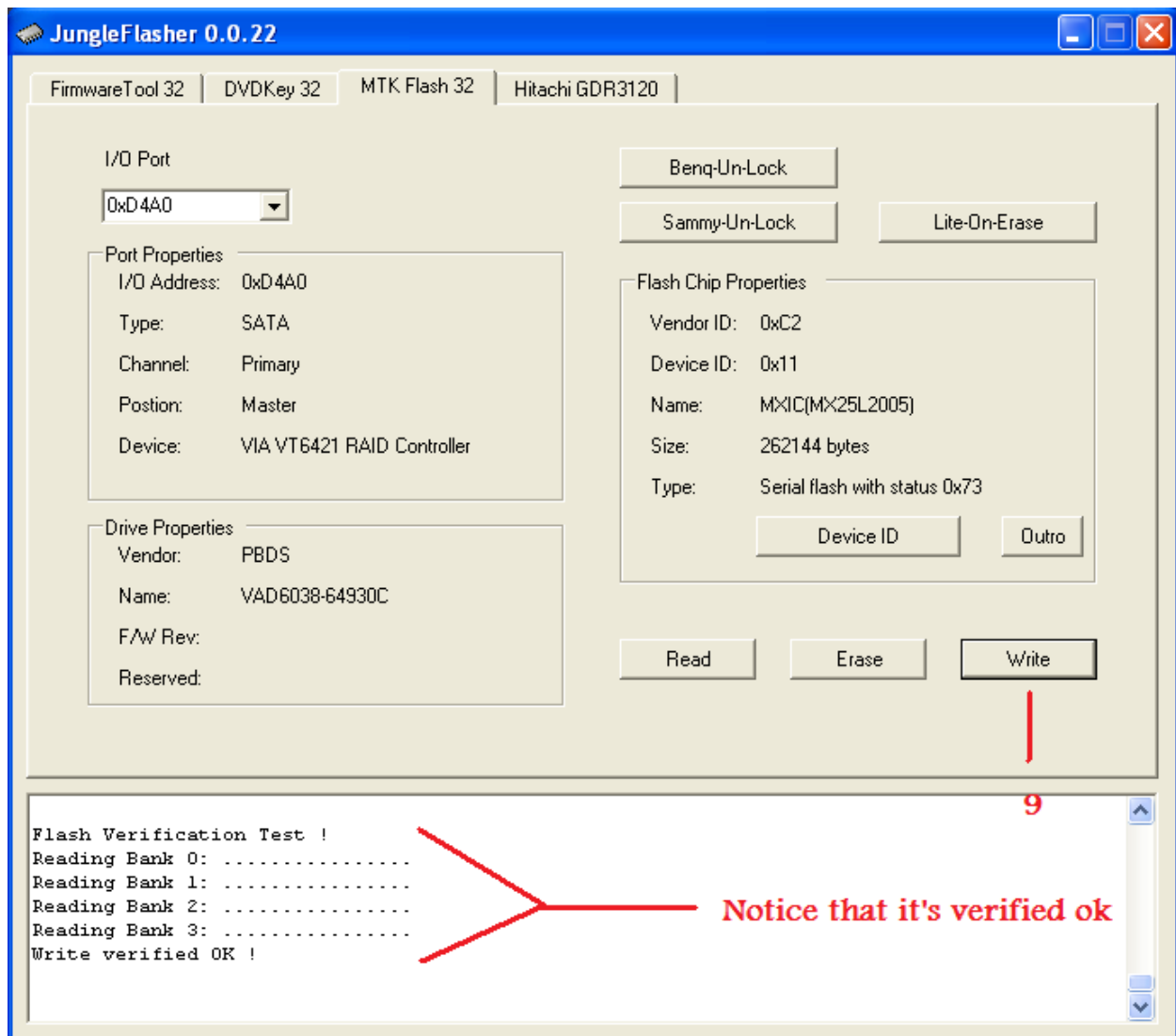
8. now click "Save to File" and save your dump



## Benq MTK Flash 32

Back on the " MTK Flash32" tab

9. Click "Write" you are not required to click on the erase tab since the erase command is sent to the drive before the drive is written to as an added precaution.



you have now successfully flashed your Benq with ix1.5 enjoy

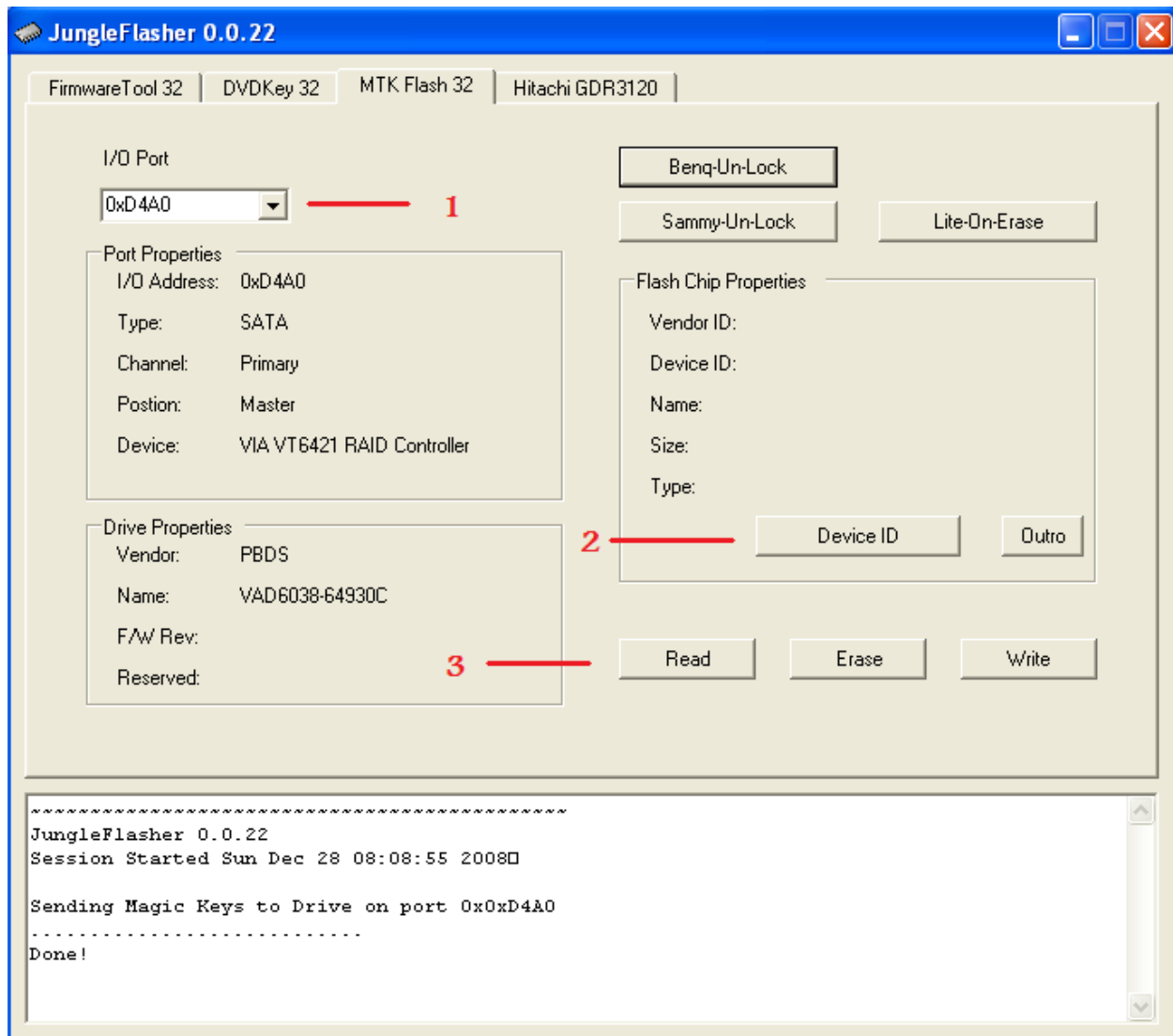
benq/sammy ix 1.5 unlock with tray half open power up from now on

## Samsung Flashing with Jungle Flasher .26beta

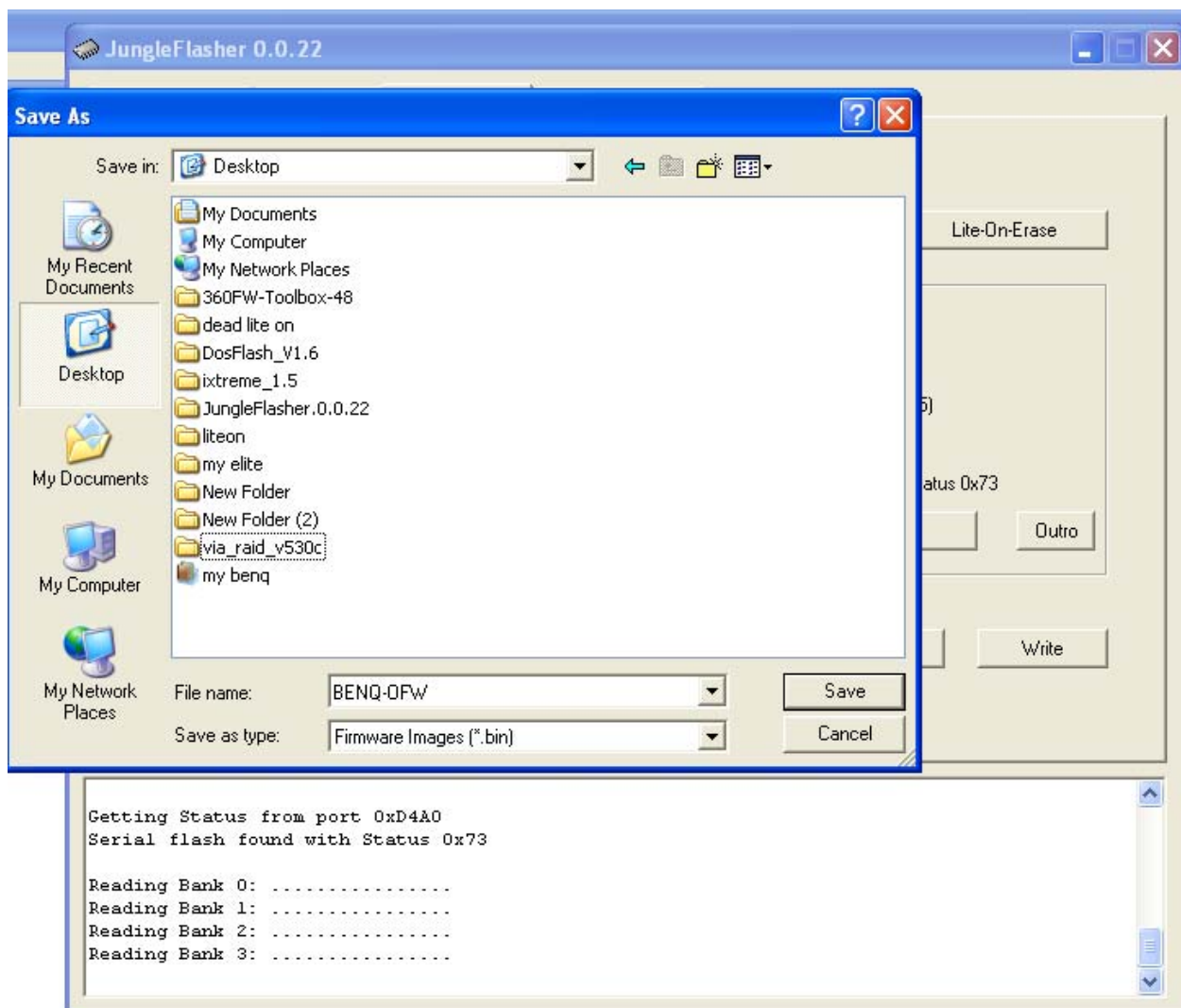
### Samsung MTK Flash 32 tab

Click on the "MTK Flash 32 tab"

1. Select I/O Port
2. Click " Device Id" what I found here is that if it asks you to resend command power cycle your drive really quick as soon as you click yes and your device id will appear.
3. click "Read"



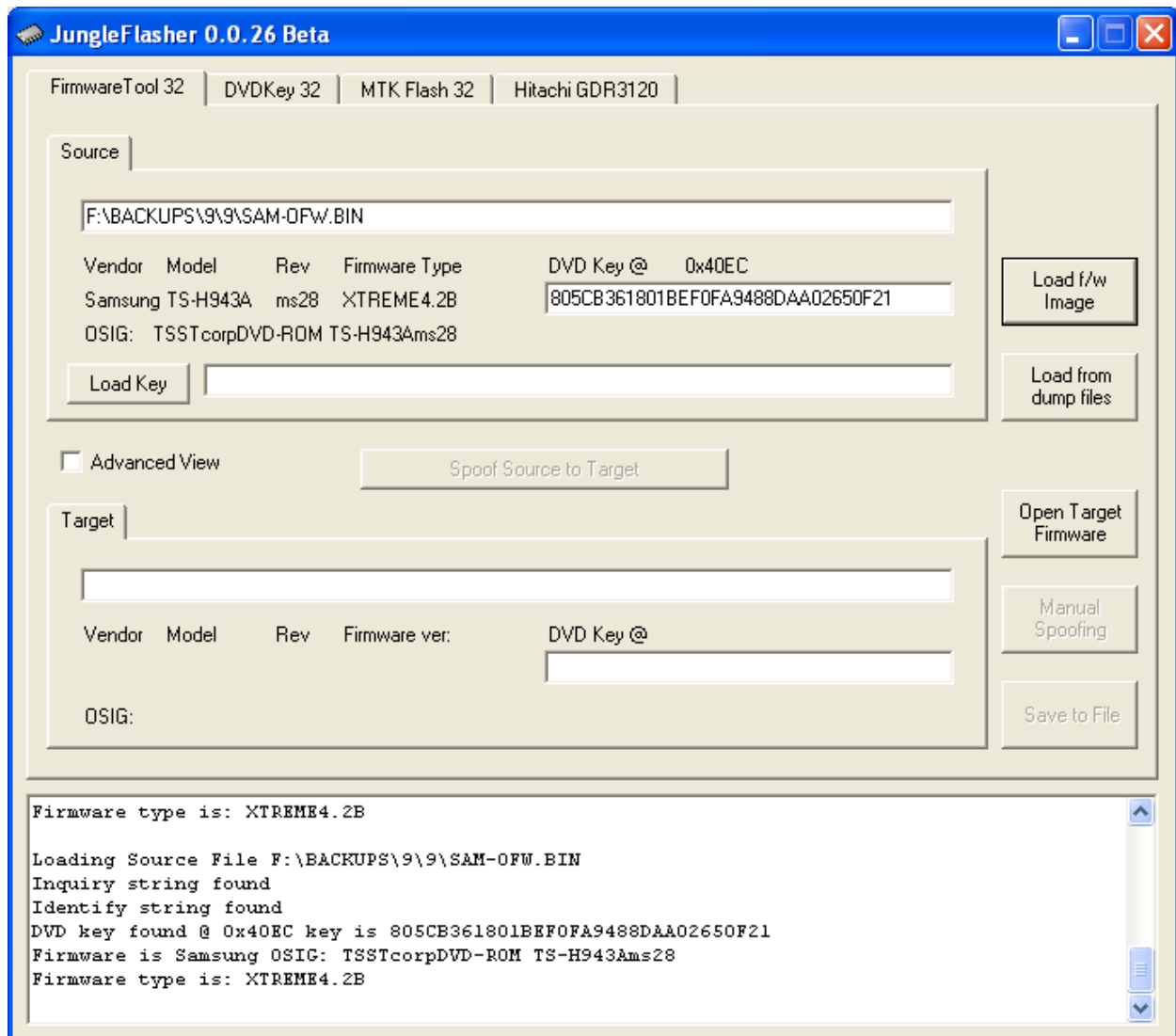
4. After you have successfully read the drive you will get a popup box asking you to have the dump, then after saving the dump



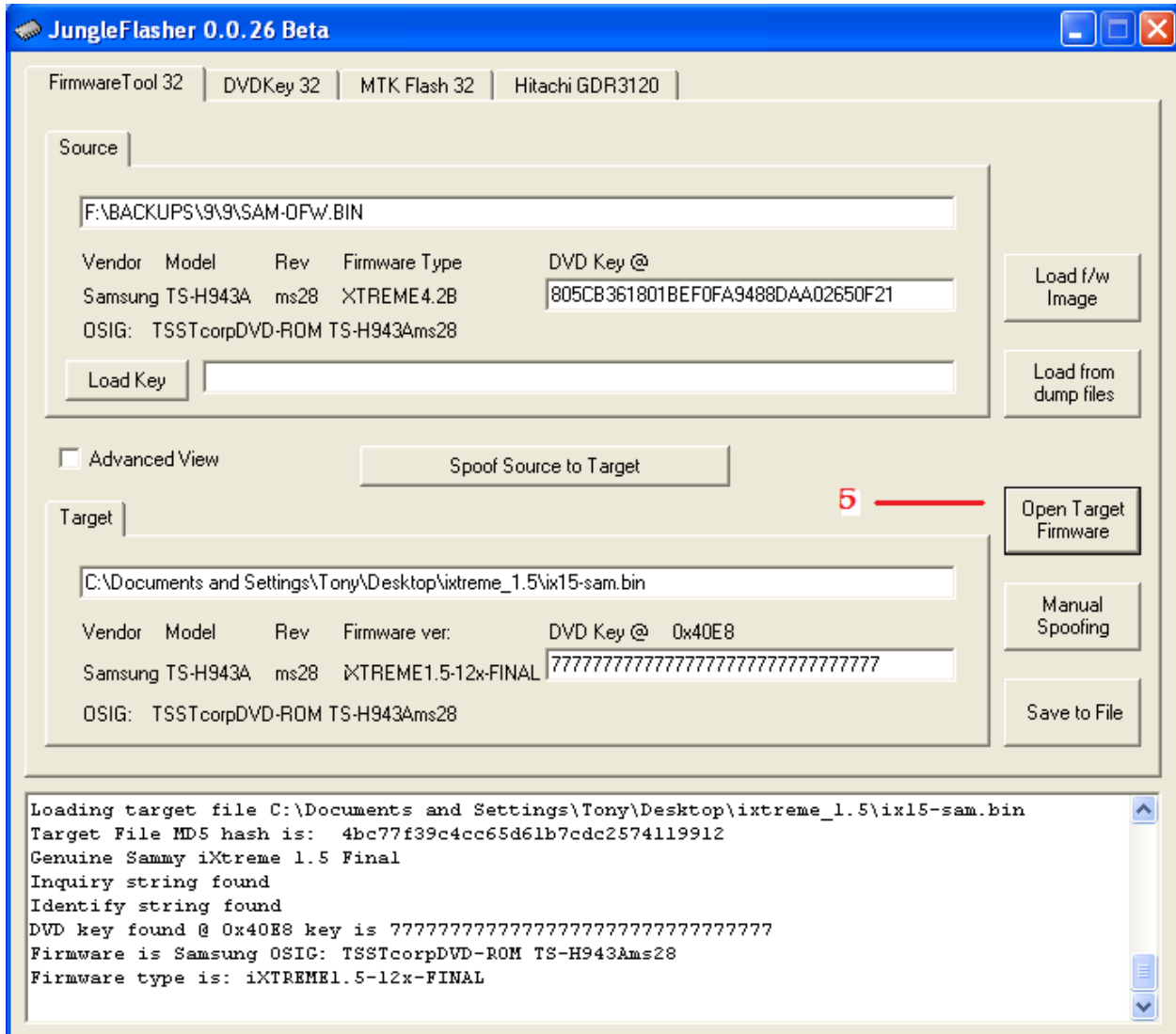
## Samsung Firmware Tool 32

"Firmware Tool 32" will open with your dump information at the top under

" Source"

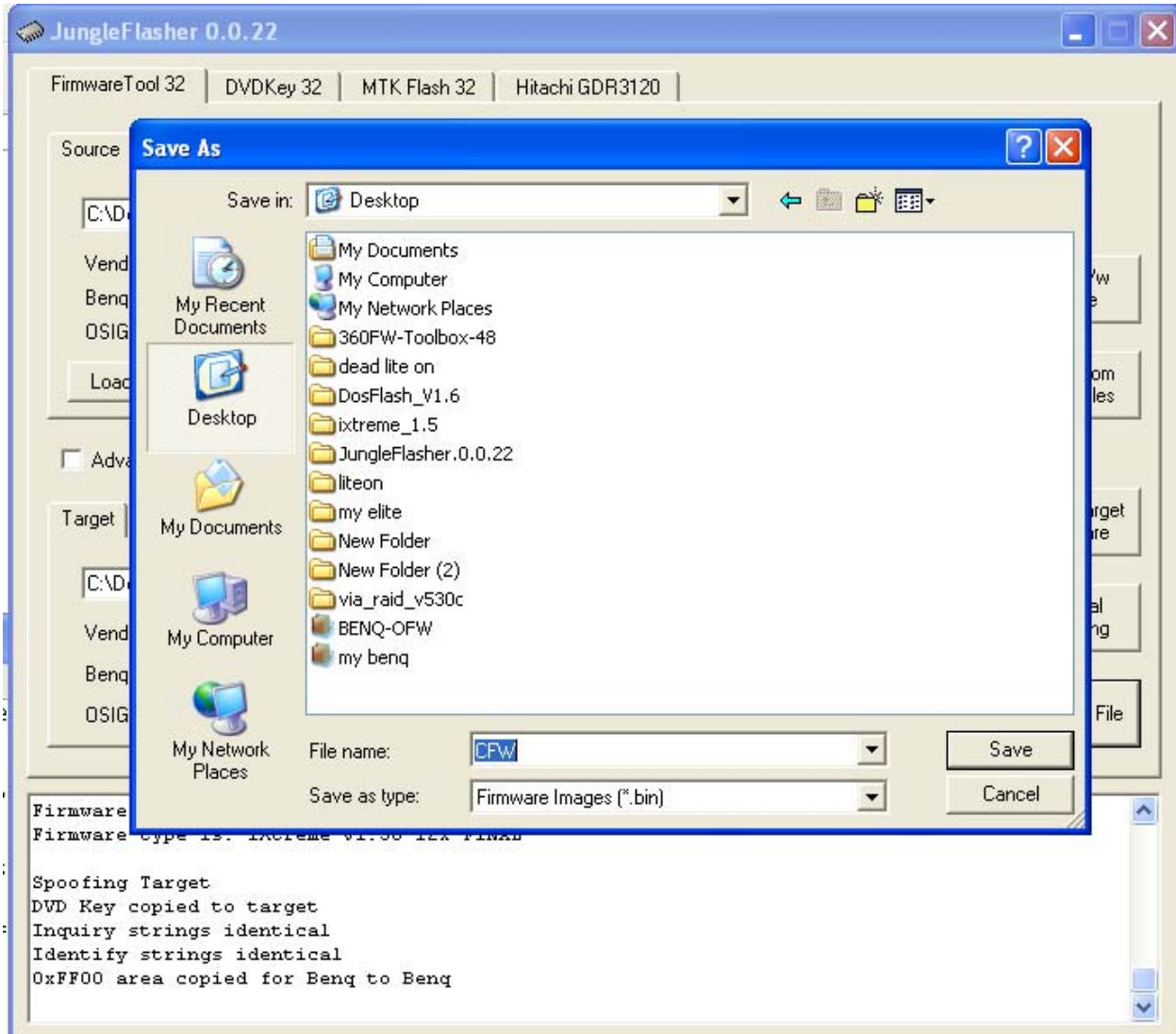


5. Click " open target firmware" and select your **ix15Sam.bin**





7. Click "Save to File" and save your dump

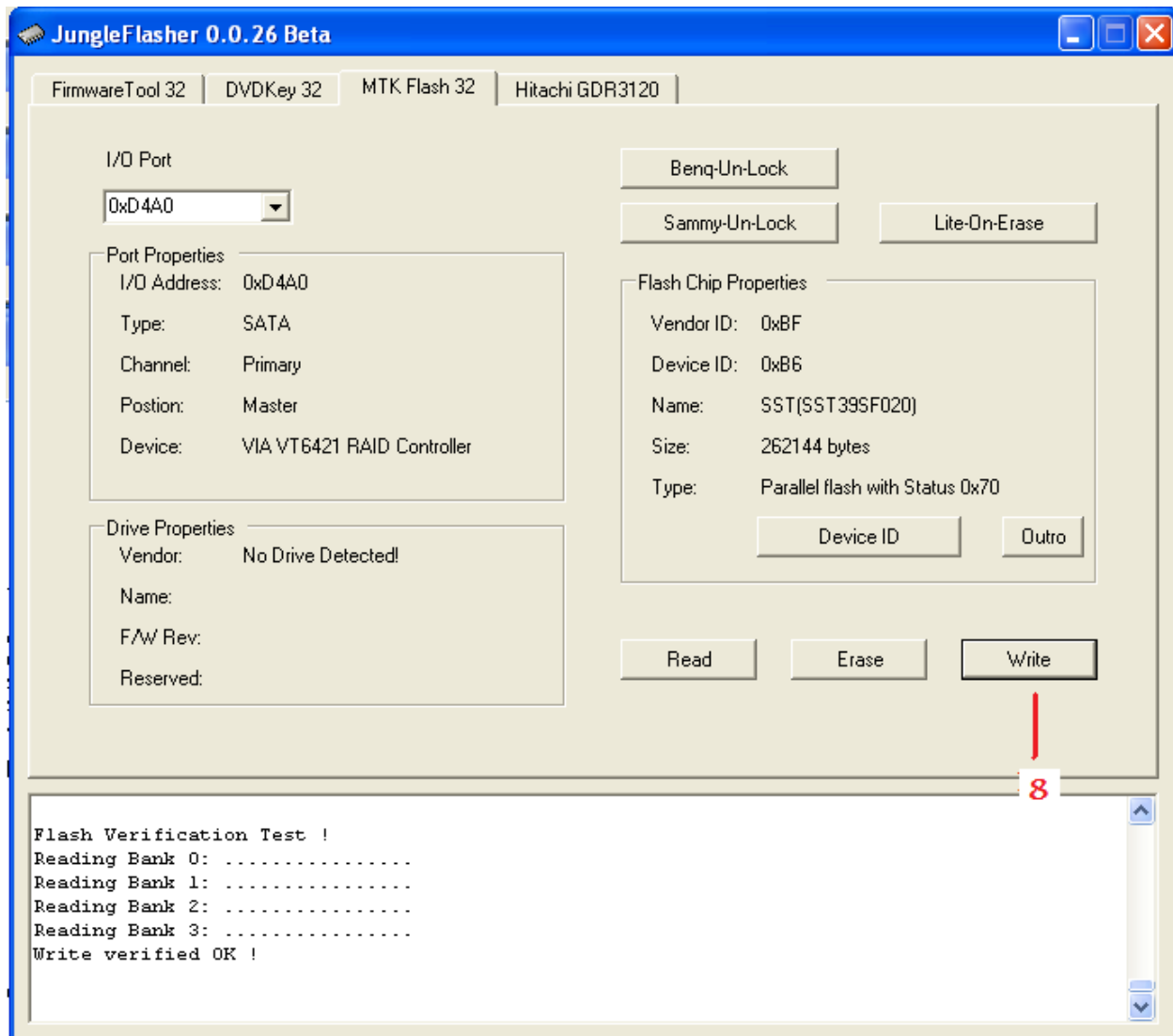


## Samsung MTK Flash32

Back to the " MTK Flash32" tab

8. Click "Write" you are not required to click

on the erase tab since the erase command is sent to the drive before the drive is written to as an added precaution.



you have now successfully flashed your Sammy with ix1.5 enjoy

benq/sammy ix 1.5 unlock with tray half open power up

Enjoy your Stealth backup games on your newly flashed drive!

The Stealth Team

#Stealth360 on Efnets

Special Thanks To

**Team Jungle** for their **AMAZING ALL IN ONE APP**

C4eva for all his amazing firmware support

all the testers and contributors to the scene.